

## K-12 Education Projects

### **East Vincent Elementary School Additions and Renovations & New East Coventry Elementary School, Owen J. Roberts School District**

Construction has begun on the new, \$28 million East Vincent Elementary School. The facility includes flexible 'makerspaces' for project-based instruction. A separate secure entry for after-school programming allows safe public access to community activity spaces. East Vincent is designed in consideration of LEED guidelines. The district is also building a new East Coventry Elementary at a cost of \$28 million. JBA's services included designing shallow foundation systems for conventional slab-on-grade design and stormwater management facilities. Completed in 2017. Architect: Marotta/Main Architects.



### **Unionville High School Additions and Renovations, Unionville-Chadds Ford School District, Kennett Square, PA**

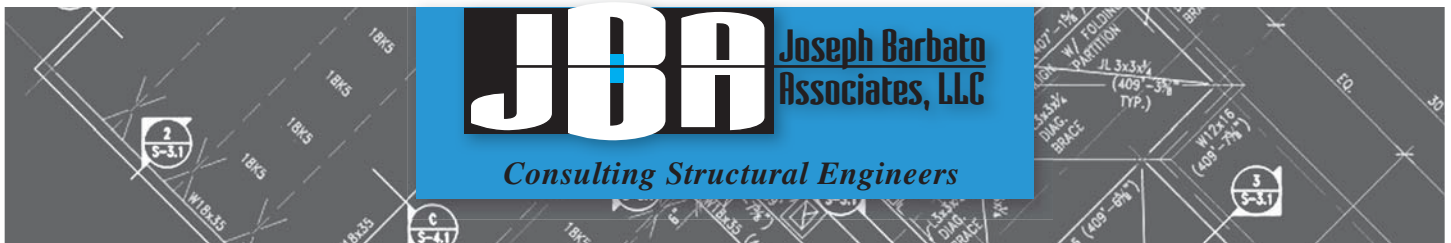
This \$65 million project included 170,000 square feet of additions and 200,000 square feet of renovated space for an existing high school building. The three-story addition was made with steel framing and included new parking facilities and four new stormwater detention basins. A shallow foundation system was used, along with strip and spread foundation systems for a slab-on-grade design. Construction was completed while the school was fully occupied extending over three years. Completed in 2012. Architect: Marotta/Main Architects.



### **Northley Middle School Additions/Renovations, Penn-Delco School District, Aston, PA**

This project encompassed 127,000 square feet of renovation and 20,000 square feet of additions. Three additions were designed: one two-story structure with four classrooms on each floor; and two one-story additions that included enlargement of offices and rooms adjacent to the natatorium. The structure was steel framed with an interior light-gauge metal framing design. The natatorium was also restored. A geothermal field was installed for heating and cooling. The parking area was also expanded and site utilities were relocated. Completed in 2014. Architect: Marotta/Main Architects.





## K-12 Education Projects

### **Marple Newtown High School, Marple Newtown School District, Newtown Square, PA**

This project involved the design of 50,000 square feet of expansion space and 300,000 square feet of renovations. Multiple additions were constructed to add new classrooms, a library, cafeteria, kitchen, performing arts spaces and dressing rooms. New supplemental parking facilities were designed as well as underground infiltration basins. Nearly 97 percent of the existing building was reused. The foundation system consisted of strip and spread footings with steel framing. The construction budget was \$48 million. Completed in 2012. Architect: Bonnett Associates Inc.



### **Delaware County Intermediate Unit, Aston and Marple Campuses, Delaware County, PA**

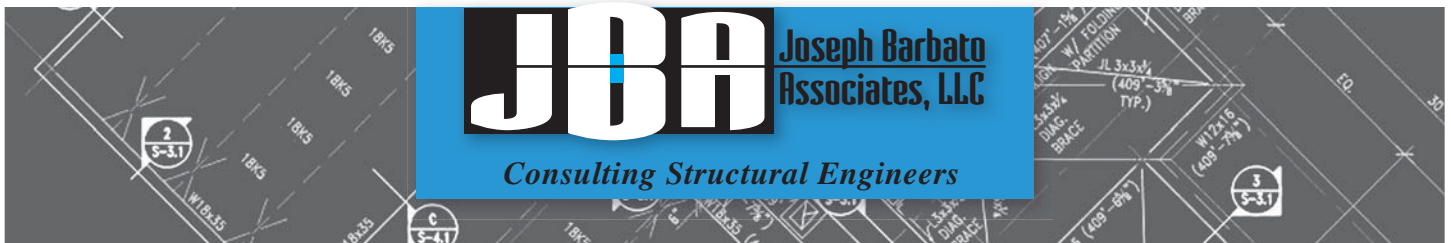
This \$33 million expansion project will add two separate one-story buildings to a technical high school, increasing the footprint from 70,000 square feet to 160,000. Additions include a two-story wing with a one-story entrance piece, and another two-story addition to serve early childhood education classes. The structure was designed with shallow strip and spread foundations, slab on grade, and steel framing. JBA also provided structural design for a new elevator at the Marple campus in Broomall, PA. Estimated completion in 2016. Architect: Marotta/Main Architects.



### **Academy Park High School, Southeast DelCo School District, Sharon Hill, PA**

Two one-story additions and one three-story addition have added 29,000 square feet to this high school, with 160,000 square feet of renovations to existing spaces. Expansion areas added student amenities, including an auditorium, gym, auxiliary gym, weight room, cafeteria, bathrooms, lockers, library and additional classrooms. JBA's services include design of the structures with CMU blocks and a brick veneer. Also designed were an underground stormwater detention system, demolition plans and retaining walls. JBA recommended masonry restoration repair procedures to correct water infiltration problems in the existing façades, and reviewed existing roof framing to accommodate HVAC upgrades. Construction Budget: \$25 million. Completed in 2013. Architect: Bonnett Associates Inc.





## K-12 Education Projects

### **Francis E. Willard Elementary School, Philadelphia School District, Kensington, PA**

This new 130,000-square-foot school accommodates 850 K-8 students and includes 62 classrooms with shared rooms for technical education, computer and science labs, art and music, gym, auditorium, cafeteria and offices. This LEED-Certified facility was supported with steel and a masonry exterior skin, aluminum windows with insulated glass units, and metal panel systems. Completed in 2010. Architect: PZS Architects, LLC.



### **Hilltop Elementary School, Chichester School District, Chichester, PA**

This addition to Hilltop Elementary School included environmental remediation of underground missile silos discovered 20 feet below the expansion site. The A/E team designed a two-story, steel-frame addition of 110,000 square feet and a smaller Administrative Building with parking areas and athletic fields. JBA's work included on-site survey and documentation, existing conditions reports, design drawings, construction documents, and coordination with architects and builders. Completed in 2007. Architect: Marotta/Main Architects.



### **Marcus Hook Elementary School, Chichester School District, Marcus Hook, PA**

This 47,000-square-foot school was rehabilitated, and three expansion areas were added. A 12,000-square-foot structure with new entry were added to the front. Office and P.E. areas were expanded, and entrance ramps added. The structure was designed with steel framing, masonry walls, spread and strip footing foundation, and slab-on-grade floor systems. Completed in 2009. Architect: Marotta/Main Architects.



### **The Glen Mills School, Glen Mills, PA**

This project involved the construction of a new boiler plant and maintenance facility for a school for court-referred young men. The two-story, 24,000-square-foot structure was designed with steel framing, concrete foundation walls, light gauge metal roof trusses, and brick veneer with a concrete masonry unit back-up. JBA's design role included site visits and shop drawing review. Completed in 2007. Architect: McFadden Architects.



## K-12 Education Projects

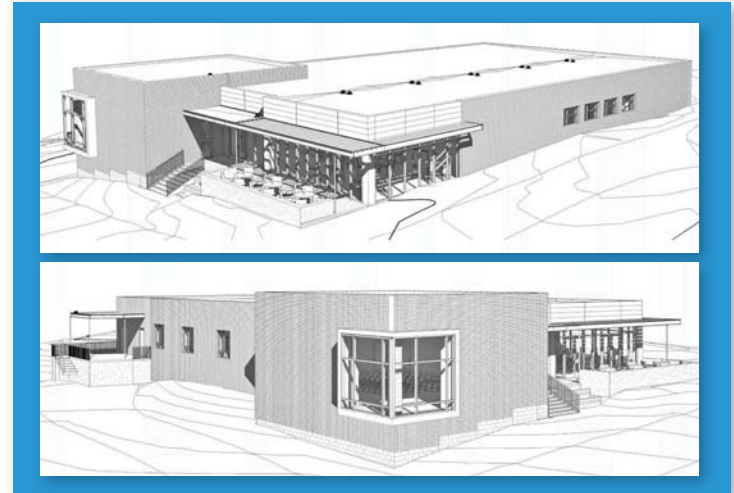
### **Congreso Education and Training Center, Philadelphia, PA**

This new, 60,000-square-foot facility for the Congreso de Latinos Unidos serves 750 students in grades K-8 with 40 classrooms. Spaces in the new facility include a kitchen, cafeteria/auditorium, offices, music and art classrooms, science labs and a library. The three story, L-shaped building is supported by structural steel. The foundations are designed with steel and perimeter concrete grade beams. Second and third floors are constructed of concrete fill on a metal deck. The roof is supported with bar joists and a metal deck. This project was completed in a design-build process from schematic design through construction. Completed in 2010. Architect: PZS Architects, LLC.



### **Loysville Youth Development / Detention Center, Loysville, PA**

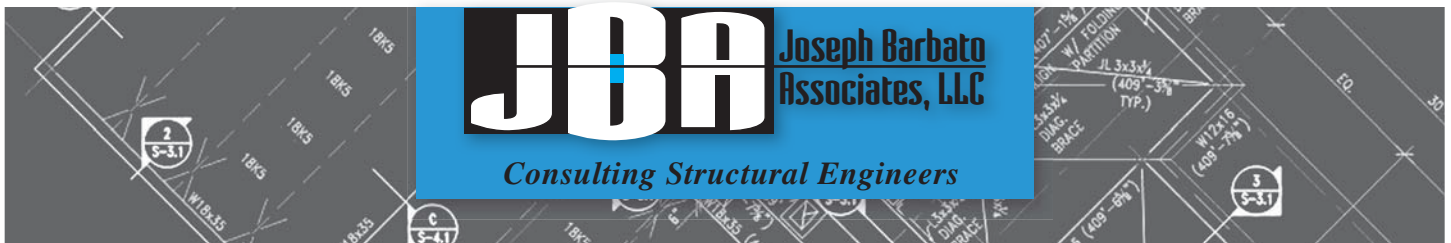
The Loysville Youth Development Center will be a new, 8,000-square-foot, two-story building and feature vo-tech classrooms for commercial painting, masonry, construction, emergency medical instruction, and building trades. The facility includes new dining areas, staff offices and classrooms. This project is administered by the Pennsylvania Department of General Services. JBA's services including reviewing the geotechnical investigation report for foundation and construction considerations and designing a spread footing foundation system. Design began in 2012. Architect: PZS Architects, LLC.



### **Chichester High School Auditorium Renovations and Classroom Addition, Boothwyn, PA**

A two-story, 4,000-square-foot addition adjoins the existing school to provide additional classrooms. The addition was designed as a slab-on-grade structure with exterior walls constructed of steel framing with a façade of brick and CMU block. A shallow foundation system consisted of strip and/or spread footings. This project also renovated the theater and adjacent dressing rooms, music education room, office and storage space. A new rigging system and electrical upgrades were installed along with new seating. Completed in 2011. Architect: Marotta/Main Architects.





## K-12 Education Projects

### **Springton Lake Middle School, Rose Tree Media School District, Media, PA**

This 29,000-square-foot renovation / addition provided improvements and upgrades, including adding energy conservation innovations, safety and security methods and code upgrades. JBA's services included analysis and repair documentation for various masonry / structural steel façade issues, and analysis of existing soil conditions to accommodate a deep foundation system. Completed in 2012. Architect: Bonnett Associates Inc.



### **Penn Wood West Junior High School, Darby, PA**

This project included additions and renovations to a school for grades 7 to 9. The Classroom addition is a two-story, steel frame structure with a footprint of 63 by 129 feet. The Cafeteria addition is a single-story, steel frame structure with a footprint of 31 by 44 feet. Both structures have spread footing foundations. Completed in 2002. Architect: Bonnett Associates Inc.



### **Garnet Valley School District, Multiple Projects**

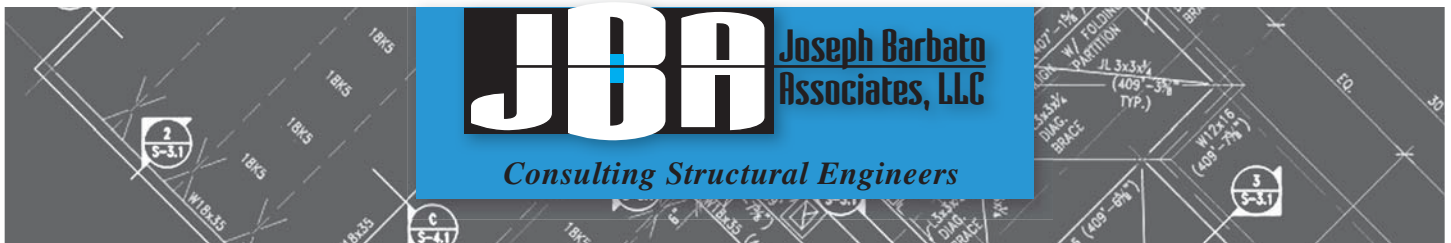
JBA worked on a range of projects for the Garnet Valley School District, including an 18,000-square-foot addition to the High School and phased renovations designed to allow continued school operations. An addition to the Middle School increased student capacity and opened in 2000. A second Middle School expansion added classrooms and science labs in 2006. The Concord Elementary School project was a new 130,000-square-foot building completed in 2006, designed with sustainable innovations and geothermal systems. Completed in 1998 through 2006. Architect: David Lynch & Associates.



### **Bethel Springs Elementary School, Garnet Valley School District, PA**

This new, two-story school for students in grades K-5 was designed with structural steel framing, a metal roof deck, retaining walls and an additional 13 acres of parking. Other site features included new drive lanes and stormwater management facilities. JBA provided analysis of a geotechnical report, reviewed testing and steel inspection reports, reviewed shop drawings, and provided site visits to observe construction progress. Completed 2002. Architect: David Lynch & Associates.





## K-12 Education Projects

---

### **Additional Smaller Projects at the Following Schools:**

---

Academy Charter School, Philadelphia, PA  
Alexander Hamilton Early Childhood, Paterson, NJ  
Ardmore Avenue Elementary School, Lansdowne, PA  
Aston Technical School, Aston, PA  
Bethel Springs Elementary, Bethel Township, PA  
Central Bucks West High School, Doylestown, PA  
C.F. Patton Middle School, Kennett Square, PA  
Chester High School, Chester, PA  
Chester Upland School District, Chester, PA  
Chester Upland School for the Arts, Chester, PA  
Chichester High School, Chichester, PA  
Chichester Middle School, Chichester, PA  
Concord Elementary, Concord Township, PA  
Episcopal Academy, Newtown Square, PA  
Erdenheim Elementary School, Flourtown, PA  
Garnet Valley School District, Concord Township, PA  
General Wayne Elementary School, Malvern, PA  
Germantown Education Center, Philadelphia, PA  
Glen Mills School, Glen Mills, PA  
Glenolden High School, Glenolden, PA  
Hillendale Elementary School, Chadds Ford, PA  
Hilltop Elementary School, Aston, PA  
Hughesville High School, Hughesville, PA  
Indian Lane Elementary School, Media, PA  
Interboro School District, Prospect Park, PA  
Linwood Elementary School, Chichester Township, PA  
Loomis Elementary School, Broomall, PA  
Lynwood Elementary School, Haverford, PA  
Main Street School, Upland Borough, PA  
Marple Education Center, Broomall, PA  
Marple High School, Marple Township, PA  
Marple Newtown High School, Newtown Square, PA  
Media Elementary School, Media, PA  
Milton Hershey School, Hershey, PA  
Montrose High School, Montrose, PA  
Mt. Carmel School District, Mt. Carmel, PA  
Mt. Pleasant High School, Wilmington, DE  
North Coventry Elementary School, Pottstown, PA  
Northwestern Lehigh High School, New Tripoli, PA  
Parkside Elementary School, Parkside, PA  
Paxon Hollow Middle School, Broomall, PA  
Penncrest High School, Media, PA  
Penn DelCo School District, Aston, PA  
Penn Wood High School, Lansdowne, PA  
Pennsylvania Institute of Technology, Moylan, PA  
Plymouth Whitemarsh High School, Plymouth Meeting, PA  
Pocopson Elementary School, Pocopson, PA  
Randolph Skills Center, Philadelphia, PA  
Renn Elementary School, Lairdsville, PA  
Ridley High School, Folsom, PA  
Rose Tree Media School District, Media, PA  
Rutgers Avenue School, Swarthmore, PA  
Sayre High School, Philadelphia, PA  
Sharon Hill Early Childhood Center, Sharon Hill, PA  
Showalter Junior High School, Chester, PA  
Smedley High School, Chester, PA  
Springfield High School, Springfield, PA  
Stetser Elementary School, Chester, PA  
St. Andrews, Middletown, DE  
Strath Haven Middle School, Wallingford, PA  
Tot Time Child Development Center, Bensalem, PA  
Unionville Elementary School, Kennett Square, PA  
Unionville High School, Kennett Square, PA  
Upper Darby High School, Upper Darby, PA  
Webster School, Philadelphia, PA  
West Branch High School, Morrisdale, PA  
William Penn School District, Lansdowne, PA  
Williamson Trade School, Media, PA